

(1) Legends of the "Flood and Landslide Hazard Map"

Danger posed by Flood

Hazard Map Legend

- 10.0 to less than 20.0m
- 5.0 to less than 10.0m
- 3.0 to less than 5.0m
- 0.5 to less than 3.0m
- 0.5m or less
- Probable inundation area (inundation flow)
- Probable inundation area (bank erosion)

Area at Risk of Inundation Damage such as Collapse of House

Area where there is a high risk of general buildings to collapse or being washed away in case a nearby bank fails. You need to evacuate this area to a designated evacuation site, etc. (horizontal evacuation) rather than staying in a safe indoor location (vertical evacuation).

Inundation flow

Area at risk of collapse of wooden houses due to bank failure or flood

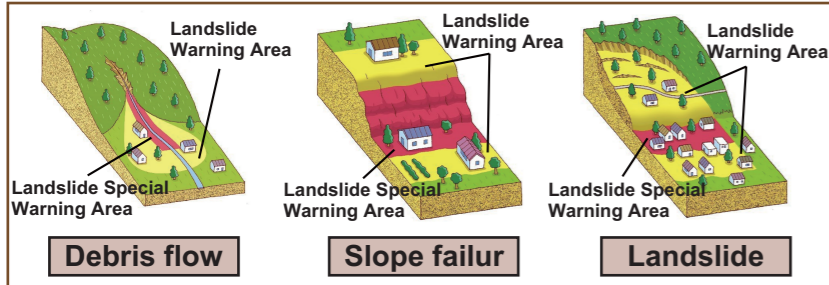


Bank erosion

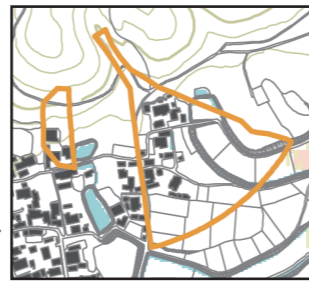
Area at risk of collapse of wooden and non-wooden houses due to bank erosion at the time of flood



Danger posed by Landslide



Areas at risk of landslide are shown in orange.



(2) Expected No. of Evacuees in Each Elementary School District (Ref.)

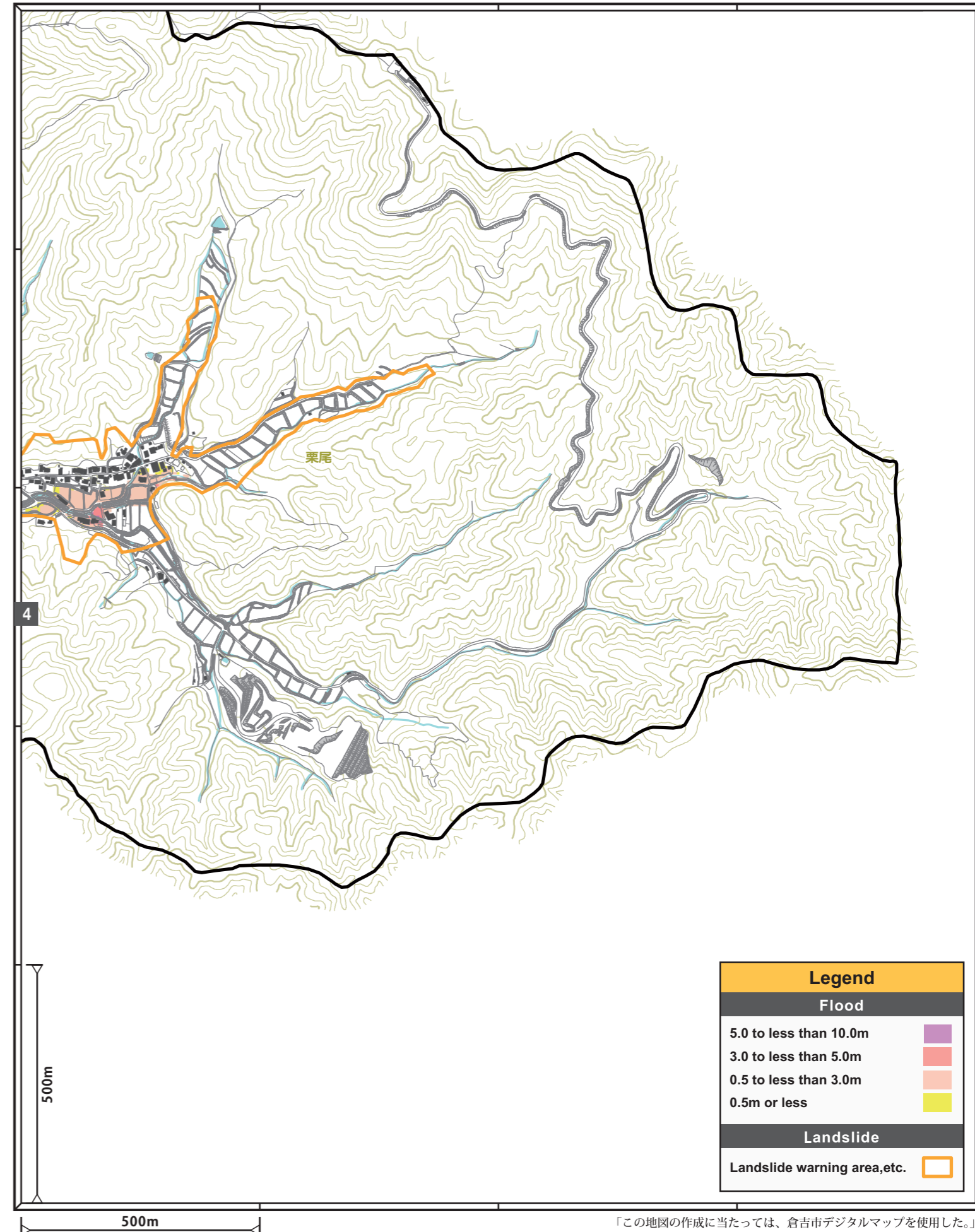
- ◆ We have calculated the number of residents (expected number of evacuees) in probable inundation areas and landslide warning areas by elementary school district.
- ◆ The scale of evacuation could be large. The local government and communities should revise their evacuation plans and carry out evacuation drills on a regular basis to avoid confusion.

[ No. of people who need to evacuate by elementary school district ]

Elementary school district	Population (2015 census)	No. of people who need to evacuate *1	Rate of people who need to evacuate
Kamihojo	2,440	730	29.9%
Agei	7,240	4,800	66.3%
Saigo	5,610	4,500	80.2%
Uenada	5,840	4,930	84.4%
Seitoku	2,920	2,370	81.2%
Meirin	3,740	1,990	53.2%
Nadate	940	300	31.9%
Yashiro	5,170	1,030	19.9%
Kitadani	1,360	410	30.1%
Takashiro	2,010	560	27.9%
Ogamo	6,710	2,580	38.5%
Kamiogamo	1,540	520	33.8%
Sekigane	3,530	1,060	30.0%
Total	49,040	25,770	52.5%

\*1 "People who need to evacuate" are those living in a house in one of the following categories.

- 4 or less story house with inundation 5m or higher
- One or two-story house with inundation 3m or higher
- One-story house with inundation 0.5m or higher
- Wooden house in the area at risk of flood damage such as collapse of houses (inundation flow)
- House in the area at risk of flood damage such as collapse of houses (bank erosion)
- House in the landslide warning area, etc.



**Legend**

**Flood**

- 5.0 to less than 10.0m
- 3.0 to less than 5.0m
- 0.5 to less than 3.0m
- 0.5m or less

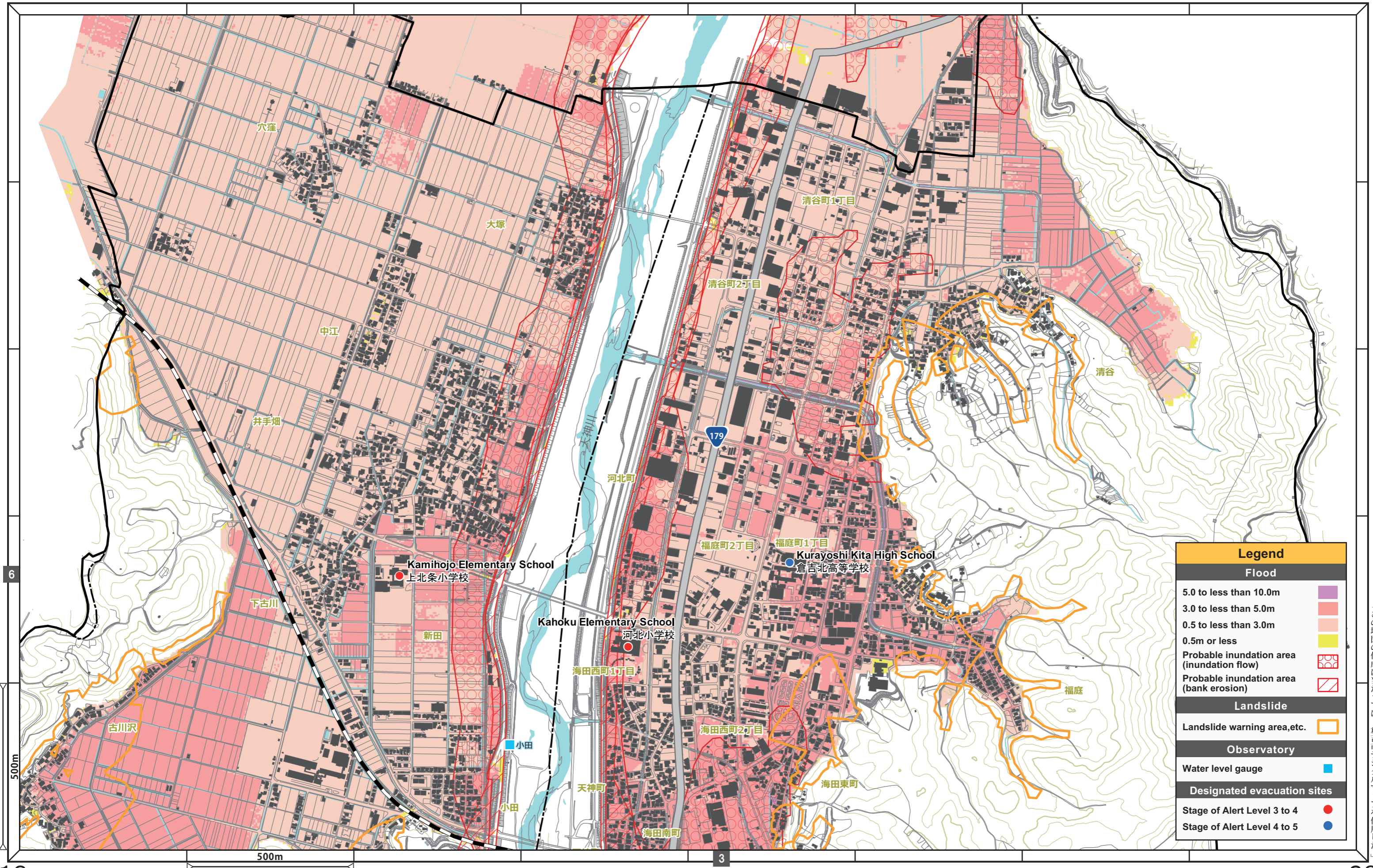
**Landslide**

- Landslide warning area, etc.

「この地図の作成に当たっては、倉吉市デジタルマップを使用した。」



Designated evacuation sites	Location	Flood	Landslide
● Kamihojo Elementary School	Shinden405-1	Available	Available
● Kahoku Elementary School	Kaidanishimachi1-130	Unavailable	Available
● Kurayoshi Kita High School	Fukubacho1-180	Available	Available

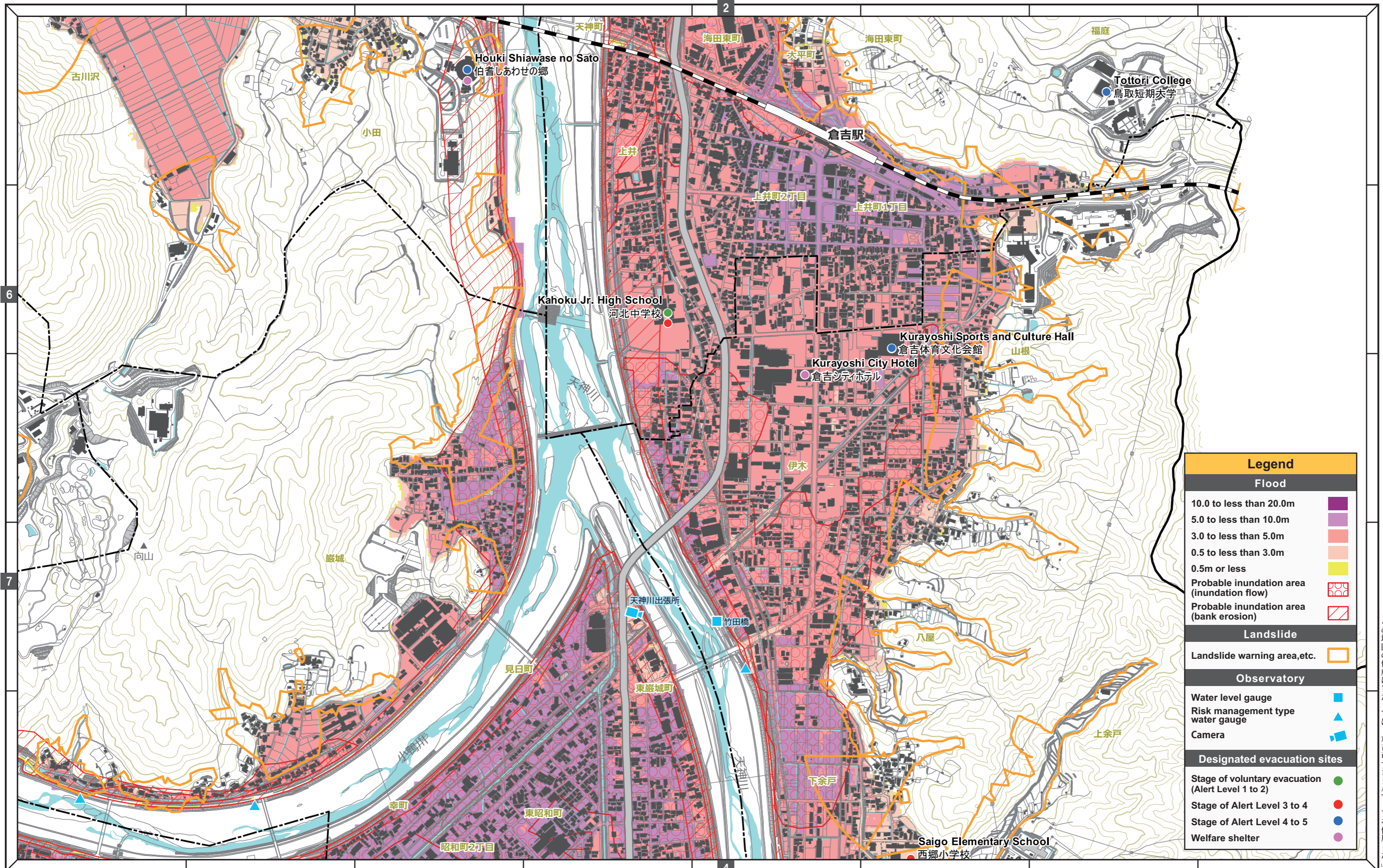


Legend	
Flood	
5.0 to less than 10.0m	
3.0 to less than 5.0m	
0.5 to less than 3.0m	
0.5m or less	
Probable inundation area (inundation flow)	
Probable inundation area (bank erosion)	
Landslide	
Landslide warning area, etc.	
Observatory	
Water level gauge	
Designated evacuation sites	
Stage of Alert Level 3 to 4	
Stage of Alert Level 4 to 5	

この地図の作成に当たっては、倉吉市デジタルマップを使用した。



Designated evacuation sites	Location	Flood	Landslide	Designated evacuation sites	Location	Flood	Landslide
● Houki Shiawase no Sato	Koda458	Unavailable	Available	● Saigo Elementary School	Shimoyodo114	Available	Available
● Kahoku Jr. High School	Agei430	Unavailable	Available	● Kurayoshi Sports and Culture Hall	Yamane529-2	Available	Available
● Tottori College	Fukuba854	Available	Available	● Kurayoshi City Hotel	Yamane543-7	Available	Available



**Legend**

**Flood**

- 10.0 to less than 20.0m
- 5.0 to less than 10.0m
- 3.0 to less than 5.0m
- 0.5 to less than 3.0m
- 0.5m or less
- Probable inundation area (inundation flow)
- Probable inundation area (bank erosion)

**Landslide**

- Landslide warning area, etc.

**Observatory**

- Water level gauge
- Risk management type water gauge
- Camera

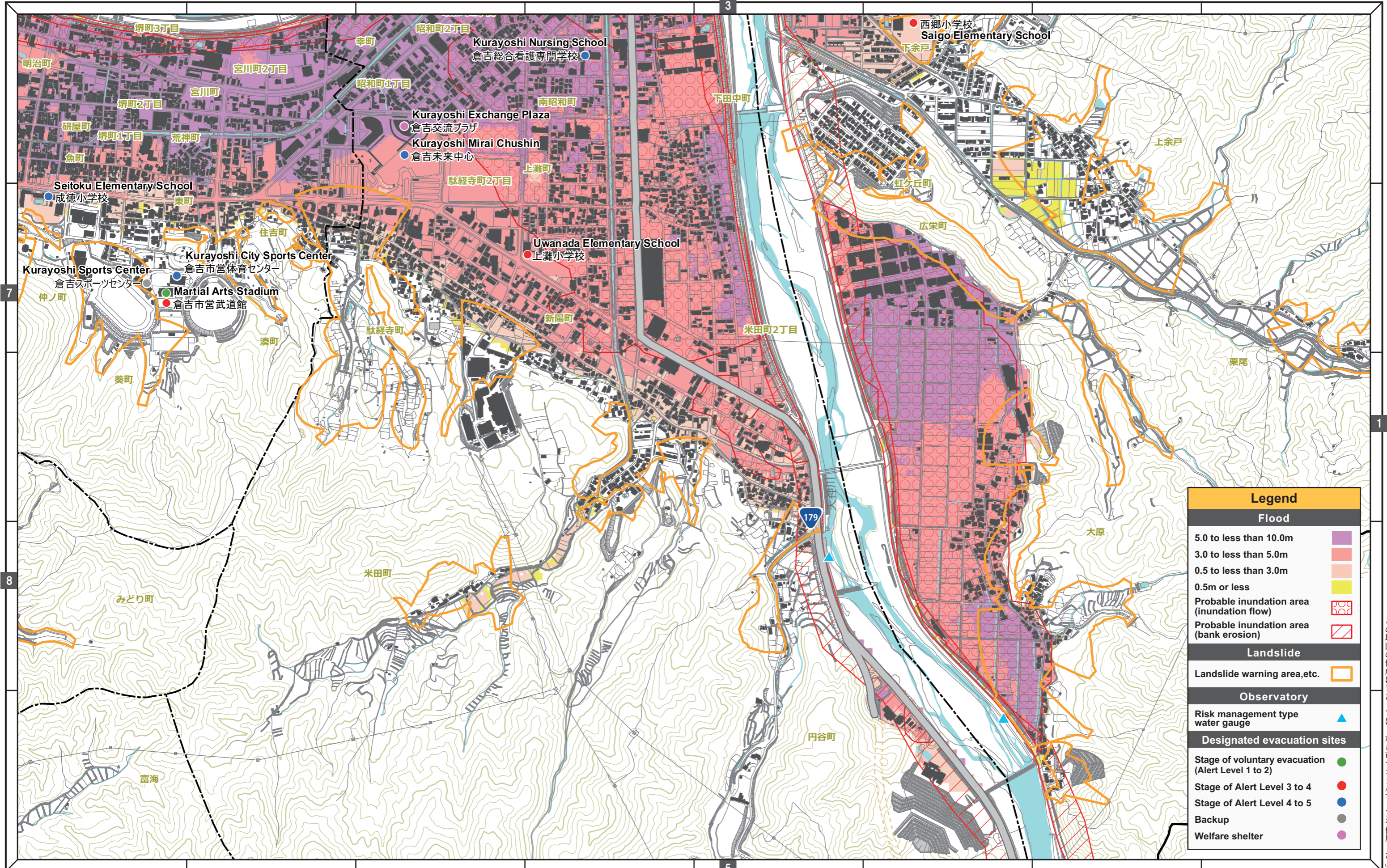
**Designated evacuation sites**

- Stage of voluntary evacuation (Alert Level 1 to 2)
- Stage of Alert Level 3 to 4
- Stage of Alert Level 4 to 5
- Welfare shelter

「この地図の作成に当たっては、倉吉市デジタルマップを使用した。」



Designated evacuation	Location	Flood	Landslide	Designated evacuation	Location	Flood	Landslide
● Saigo Elementary School	Shimoyodo114	Available	Available	● Kurayoshi Mirai Chushin	Dakyojicho212-5	Available	Available
● Uwanada Elementary School	Uwanadacho136	Available	Available	● Seitoku Elementary School	Nakanochi733	Available	Available
● Kurayoshi Exchange Plaza	Dakyojicho187-1	Unavailable	Available	● Kurayoshi Sports Center	Aoimachi591-1	Available	Available
● Kurayoshi Nursing School	Minami-showamachi15	Unavailable	Available	● Martial Arts Stadium	Aoimachi601-1	Available	Available
				● Kurayoshi City Sports Center	Aoimachi602-4	Available	Available



**Legend**

**Flood**

- 5.0 to less than 10.0m
- 3.0 to less than 5.0m
- 0.5 to less than 3.0m
- 0.5m or less
- Probable inundation area (inundation flow)
- Probable inundation area (bank erosion)

**Landslide**

- Landslide warning area, etc.

**Observatory**

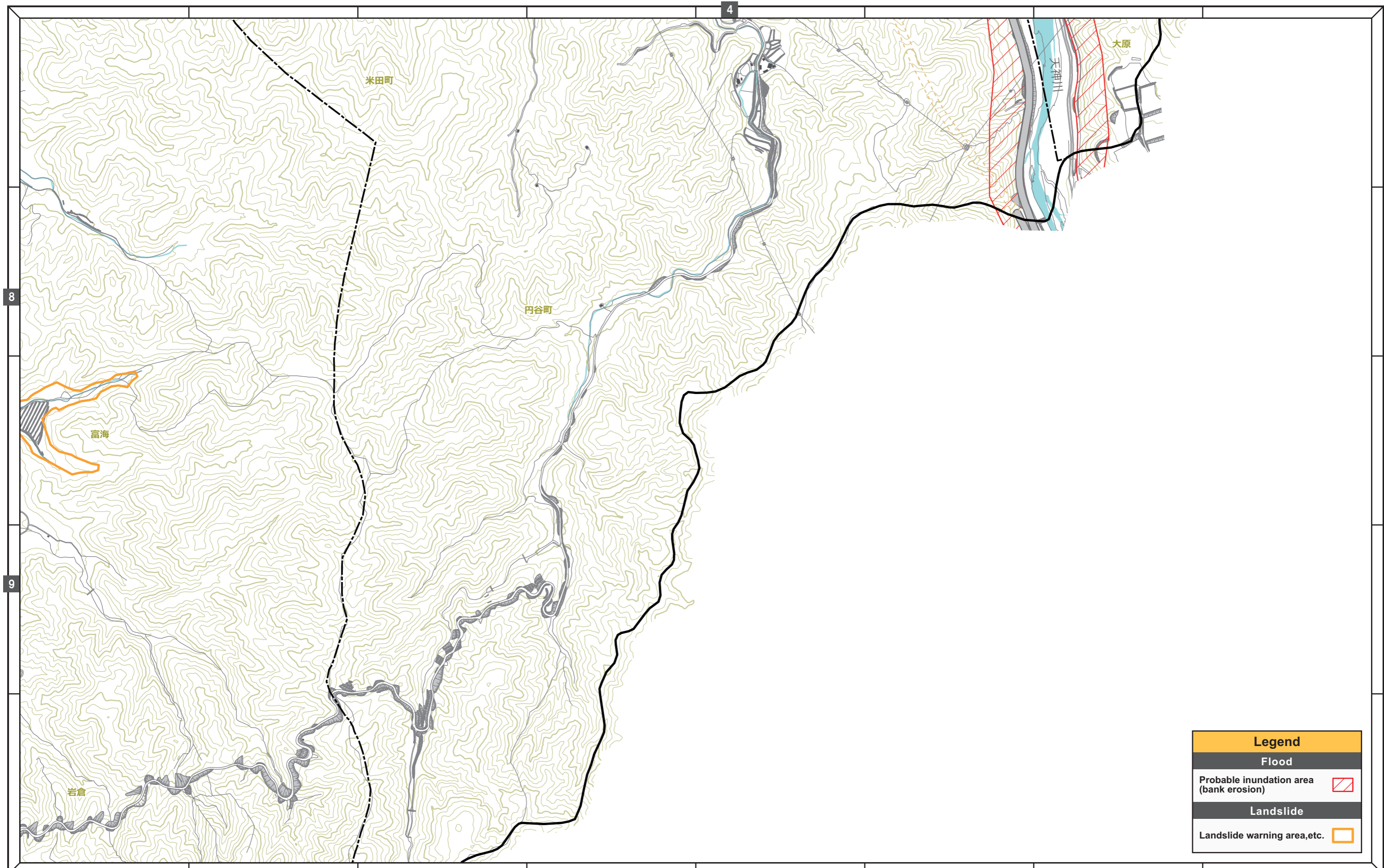
- Risk management type water gauge



**Designated evacuation sites**

- Stage of voluntary evacuation (Alert Level 1 to 2)
- Stage of Alert Level 3 to 4
- Stage of Alert Level 4 to 5
- Backup
- Welfare shelter

「この地図の作成に当たっては、倉吉市デジタルマップを使用した。」





Legend	
Flood	
Probable inundation area (bank erosion)	
Landslide	
Landslide warning area, etc.	

「この地図の作成に当たっては、倉吉市デジタルマップを使用した。」